



# Pride News...

## Headteacher's Message...

Date – 19.01.2024

Dear Families

As we settle into the new year, with renewed energy and optimism, I can't help but feel a buzz of excitement as we embark on 2024 together. At times we can face challenges, but within classrooms lies incredible potential, ready to be unlocked and nurtured. And that's why, here at Willow, we're setting the bar high – aiming for nothing less than excellence as our standard. I'm not talking about simply achieving good outcomes in assessments. It's about instilling a love of learning, a thirst for knowledge, and a drive to go above and beyond – the vital tools our children need to navigate the ever-changing world.

This commitment to excellence starts in every classroom, every day. Our dedicated staff are passionate about creating engaging lessons that spark curiosity, challenge, and inspire confidence. Excellence isn't just about what happens within the four walls of a classroom. It extends to every interaction, every conversation, every decision we make as a school community. It's about fostering a culture of respect, understanding, and inclusivity where all students feel valued and supported. So, let's make 2024 the year we truly unlock the potential of every child. I'm excited to see what we can achieve together in this new year.

Our focus, as previously shared, this term is Attendance and Behaviour. I have reviewed the attendance figures for this week, and they are low. We have unfortunately been hit by a sickness bug which seems to have swept through the school. We have had additional cleaning in place to try and reduce the spread of the bug. Having said that the attendance of children in Birch and Elm Classes are both above 95% which I am delighted with.

We also continue to focus on our ability to follow the schools of:

- Be ready
- Be safe
- Be respectful

We have seen a similar number of incidents compared to Week 1, but children need to continue to work on their ability to be respectful to their peers and adults around them. I hope that we can have your support with this.

Have a great weekend!

Pete Hales



# Pride News...

## Willow's Learning!!!



Willow went on residential  
with Elm Class to Wick Court  
Farm





# Pride News...

## Spotlight on the Curriculum



### Spotlight on the Curriculum PSHE

At Willow Primary Academy, we believe that PSHE education is a fundamental part of every child's education in order for them to become confident happy citizens. We aim to promote personal development in a structured and developmentally appropriate way in order to give children the knowledge, understanding, attitudes and practical skills to improve their life chances. We enable children to develop their sense of self-worth by encouraging them to play a positive role in contributing to school life and the wider community. Our curriculum covers a wide range of topics relating to physical and mental health, wellbeing, safeguarding and healthy relationships. We feel that learning about the emotional and social aspects of growing up will give children and young people the information, skills and positive values to empower them to have safe and fulfilling relationships and to become independent, responsible members of society.

*Aim to develop the 'whole child' through a spiral curriculum.*

*Half termly units develop knowledge, skills and understanding.*

*On emotional literacy, building resilience and nurturing mental and physical health.*

*PSHE is embedded throughout the whole curriculum.*

*Is an important part of school assemblies, where children's spiritual moral, social and cultural curiosity is stimulated.*

*Events, key campaigns and themed days provide opportunities for children to explore topical issues*





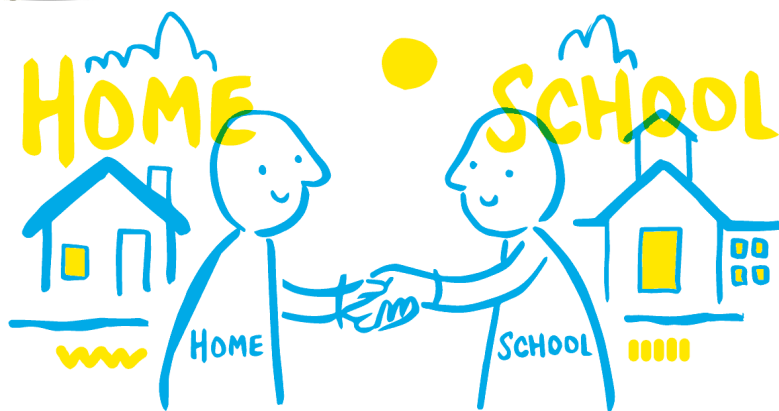
# Pride News...

## Family Engagement



At Willow it is vital that we are working in partnership with our families. To help Support you and your child or children we have some events coming up!

It would be great if you could join us for these!



### Coffee Morning

*Come and join our Reading Lead, Lisa Simmonds for a coffee and a chat.*

*This is an informal opportunity to find out more about how we support your child at Willow with their Reading.*

*Tuesday 23<sup>rd</sup> January 2024  
from  
9.00 am to 10.00 am*

### Coffee Morning

*Come and join our Maths Lead, Carly Tonks for a coffee and a chat.*

*This is an informal opportunity to find out more about how we can support your child at Willow.*

*Thursday 22<sup>nd</sup> February 2024  
from 9.00 am to 10.00 am*



# Pride News...

## In Other News

### Online Safety Tip of the Week



### Safeguarding Safety Tip of the Week Gangs

This week our safeguarding focus is gangs. The word 'gang' means different things in different contexts, and the government distinguishes between peer groups, street gangs and organised criminal gangs. It's not illegal for a young person to be in a gang, however, gang membership can be linked to illegal activity, particularly organised criminal gangs involved in trafficking, drug dealing and violent crime. Young people may become involved in gangs for many reasons, including: peer pressure and wanting to fit in with friends; they feel respected and important; they want to feel protected from other gangs or bullies or they want to make money and are promised rewards. For more information visit the NSPCC website.



### Free School Meals

#### Why should I apply?

For every child that is entitled to free school meals the school receives extra funding to enhance provision and improve progress and outcomes for children. So please apply even if you do not wish to take up your free school meal.

#### What are the qualifying criteria for Free School Meals?

Your child might be able to get free school meals if you get any of the following:

- Income Support
- Income-based Jobseeker's Allowance
- Income-related Employment and Support Allowance
- Support under Part VI of the Immigration and Asylum Act 1999
- The guaranteed element of Pension Credit
- Child Tax Credit (provided you're not also entitled to Working Tax Credit and have an annual gross income of no more than £16,190)
- Working Tax Credit run-on - paid for 4 weeks after you stop qualifying for Working Tax Credit
- Universal Credit - your household income must be less than £7,400 a year (after tax and not including any benefits you get)

**To apply or find out further information please follow the link below:**

[Apply for free school meals | Gloucestershire County Council](#)



# Pride News...

## Deal with dinner time distraction



Jodie Plows,  
BeeZee Bodies Nutritionist

### Six quick tips

to help you set boundaries around screen time – for more enjoyable meals together and happier, healthier children:



1. Agree a daily routine with your child, so they know when meals and screen time are.
2. Set timers for screen time and be sure to stick to those boundaries.
3. Give them pre-dinner warnings, like "dinner is in 10 minutes", "5 minutes" etc.

4. Build up time away from screens - start with half the meal without and increase gradually.
5. Try to make dinner engaging - make conversation, play games or do a quiz.
6. Allow movement breaks if needed, to keep them engaged with eating without a screen.



X22-2072



Want to start some healthy habits as a family in 2024?

Sign up now and our friendly team will support you.

Scan the code

...or click here to find out more

Sign up today!





# Pride News...

## PRIDE AWARDS!

These children have shown what it means to be:

- ★ **Be Positive**
- ★ **Be Respectful**
- ★ **Be Individual**
- ★ **Be Determined**
- ★ **Be Excellent**

### PRIDE Award WINNERS...

**Acorn** – Isla

**Ash** – Julian and Alfie

**Birch** – Chelsea

**Chestnut** – Daneen and Michael

**Elm** – All of Elm Class

**Maple** – Phoebe and Jenson

**Oak** – Theo and Isaiah

### PRIDE Champions

**Acorn** - Ezra

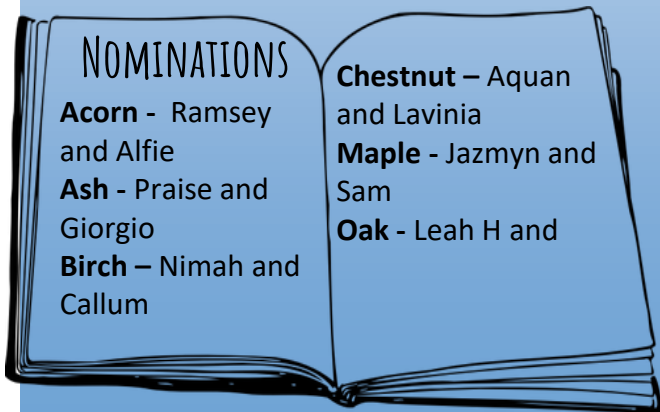
**Birch** - Demitri







## WILLOW'S STAR READER SPECIAL SURPRISE AWARD



STAR READER...



Each week teachers will nominate a star reader from their class. A star reader is someone who has shown progress in reading, shown enjoyment of reading someone who has overcome difficulties in reading or shares their love of reading with the class or a friend. At Willow Primary Academy, we know the key to knowledge is reading and we want to inspire a lifelong love of reading! Willow has a special surprise book for the Super Star Reader to take home, keep, read and enjoy!





## THIS WEEK'S CLASS TOP DOODLERS ARE:

ASH – PRAISE, LACIE-MAE AND CHARLIE

BIRCH – LILY, TALIAH AND DEMITRI

CHESTNUT – KHADIJAH, ETHAN AND  
LAVINIA

ELM – SAM, JACOB AND ELIANA

MAPLE – SHAYLA-RAI, SUMMER, KAYLA

OAK – EVAN, VASLAT AND LOGAN



Each week teachers will monitor the activity on Doodle of the children in their class. They will look at the combined number of stars children have earned for all four of the Doodle apps.

Each week the top 3 Doodlers from each class will receive 10 extra PRIDE points to spend in the PRIDE shop.

Keep up the effort with the home learning.

**HAPPY DOODLING!!!**



# Pride News...

## Attendance Superstars

**This week: 89.38 %**

**Our year so far: 92.34 %**

## ATTENDANCE MATTERS



Class	Attendance
Acorn	74.45%
Ash	90%
Birch	95%
Chestnut	90.83%
Elm	97.67%
Maple	83.45%
Oak	94.62%



## Reminder

Gates are open by 8.45am and close shortly after. Please ensure your child is on time and ready to learn.

If your child arrives late you need to take them to reception and you as the parent must sign them in on the screen.

Thank you for your cooperation





# Pride News...

## Dates for Your Diary

### Term Dates for 2023 – 2024

Term 1 from Wednesday 6<sup>th</sup> September 2023 to Friday 27<sup>th</sup> October 2023

Term 2 from Tuesday 7<sup>th</sup> November 2023 to Friday 22<sup>nd</sup> December 2023

Term 3 from Monday 8<sup>th</sup> January 2024 to Thursday 8<sup>th</sup> February 2024

Term 4 from Monday 19<sup>th</sup> February 2024 to Friday 22<sup>nd</sup> March 2024

Term 5 from Tuesday 9<sup>th</sup> April 2024 to Friday 24<sup>th</sup> May 2024

Term 6 from Monday 3<sup>rd</sup> June 2024 to Friday 19<sup>th</sup> July 2024

Christmas Bank Holidays	25 <sup>th</sup> December 2023
	26 <sup>th</sup> December 2023
New Year Bank Holiday	1 <sup>st</sup> January 2024
Good Friday	29 <sup>th</sup> March 2024
Easter Monday	1 <sup>st</sup> April 2024
Early May Bank Holiday	6 <sup>th</sup> May 2024
Spring Bank Holiday	27 <sup>th</sup> May 2024
Summer Bank Holiday	26 <sup>th</sup> August 2024

All term dates can be found on our website [here](#)







# Pride News...

## Dates for Your Diary

### School Events

- Monday 15<sup>th</sup> January 2024-Friday 19<sup>th</sup> January 2024 – Elm class Residential
- Tuesday 23<sup>rd</sup> January 2024 (9.00 am to 10.00 am) – Coffee Morning with Reading Leads
- W/C 5<sup>th</sup> February 2024 – Children's Mental Health Week
- Monday 5<sup>th</sup> February 2024 – Elm class Assembly
- Friday 9<sup>th</sup> February 2024 – INSET DAY
- Monday 12<sup>th</sup> February - Friday 16<sup>th</sup> February 2024 – HALF TERM WEEK
- Wednesday 21<sup>st</sup> February 2024 – Birch class trip to the Mosque
- Thursday 22<sup>nd</sup> February 2024 (9.00 am to 10.00 am) – Coffee Morning with Maths Leads
- Monday 26<sup>th</sup> February 2024 – Chestnut class Assembly
- Thursday 29<sup>th</sup> February 2024 – Coffee Morning with Maths Lead
- Friday 8<sup>th</sup> March 2024 – Oak Class trip to Pitt River Museum
- Monday 11<sup>th</sup> March 2024 – Birch class Assembly
- Friday 15<sup>th</sup> March 2024 – Red Nose Day
- Thursday 21<sup>st</sup> March 2024 (9.00 am to 10.00 am) – Coffee Morning with Writing Leads
- Friday 22<sup>nd</sup> March 2024 (1.15 pm to 1.45 pm) – Easter Celebration
- Monday 25<sup>th</sup> March 2024 –Friday 5<sup>th</sup> April 2024 – Easter Holidays
- Monday 8<sup>th</sup> April 2024 – INSET DAY
- Thursday 11<sup>th</sup> April 2024 – Birch class trip to W-S-M.
- Thursday 25<sup>th</sup> April 2024 – Coffee Morning with Headteacher and Head of Piper Centre 9:00am – 10:00am
- Monday 6<sup>th</sup> May 2024- May Bank Holiday
- W/C Monday 13<sup>th</sup> May – KS2 SAT's Week
- Monday 27<sup>th</sup> May 2024- Friday 31<sup>st</sup> May 2024 – May HALF TERM
- Monday 3<sup>rd</sup> June 2024 – Year 4 Multiplication check
- Monday 10<sup>th</sup> June 2024 – Phonics Screening Check
- Tuesday 11<sup>th</sup> June 2024 – Willow Sports Day
- Wednesday 12<sup>th</sup> June 2024 – Piper Centre Sports Day
- Monday 24<sup>th</sup>
- Monday 8<sup>th</sup>

